

DrivetechTM **4x4**
...driven by quality



ACCESSORIES

EVEN MORE FOR YOUR 4x4



Warranty:

Winch Equipment - 3 Years | All Recovery Equipment - 1 Year | Air Compressor Kits - 3 Years | Tyre Maintenance - 1 Year | Camping - 1 Year | Rival Accessories - 2 Years | Flares - 1 Year | All Lights - 3 Years | LED Work Light & 3" Work Light - 3 Years | Light Wiring Kit, Mounting Clamps, Driving Light Covers & Lock Nuts - 1 Year | Portable LED Work Light & All Strip Lights - 1 Year | Electrical - 1 Year | V-SPEC & ARMAX™ Safari Snorkels - Lifetime | R-SPEC Safari Snorkels - 5 Years | Suspension Lift Kits - 3 Years/80,000km | Drivetech 4x4 Supashocks - 3 Years/80,000kms | Shock Absorbers & Dampers - 3 Years/80,000km | Suspension Lift Kits - 3 Years/80,000km | SumoSprings - 2 Years/60,000km | Filtration - 1 Year

Some products may vary from the image shown depending on the make and model of vehicle.

YOUR EASY GUIDE **EVEN MORE FOR YOUR 4x4**

Drivetech[™]**4x4**
...driven by quality

CONTENTS

RECOVERY EQUIPMENT

WINCHES	4
RECOVERY KITS	5
KINETIC RECOVERY ROPE	8
HIGH LIFT JACK	9

TYRE MAINTENANCE

AIR COMPRESSORS	10
REPAIR & ACCESSORIES	12
PRESSURE MONITORING	13

CAMPING

AWNINGS & ACCESSORIES	14
-----------------------	-----------

DRIVETECH 4x4 BY RIVAL

BONNET/TAILGATE STRUTS	16
BUMPERS	18
UNDERBODY ARMOUR	19

FLARES	21
---------------	-----------

LIGHTING

LIGHT BARS	24
DRIVING LIGHTS	25
WORK LIGHTS & ACCESSORIES	27

CAMPING LIGHTS	28
----------------	-----------

ELECTRICAL	30
-------------------	-----------

SNORKELS	32
-----------------	-----------

SUSPENSION

SUPASHOCK	34
ENDURO PRO	36
SHOCKS & DAMPERS	38
SUSPENSION LIFT KITS	39

SUMOSPRINGS	40
--------------------	-----------

FILTRATION	41
-------------------	-----------

MERCHANDISE	43
--------------------	-----------

RECOVERY EQUIPMENT

WINCHES



DUAL SPEED WINCH

Using advanced dual speed technology for maximum strength and fast line retrieval, the Drivetech 4x4 Dual Speed Winch is available in 9,500lb and 12,000lb models.

- 9,500lb: DT-D9500SR
- 12,000lb: DT-D12000SR

Features include:

- Multiple control box mounting options
- Waterproof rating IP67
- 26m synthetic rope
- Quiet operation

Kit includes:

- 2-in-1 wired and wireless remote control
- High quality battery isolation switch
- Remote mount control box socket
- Aluminium hawse fairlead



WINCH DAMPER

DT-DAMPER

- An essential safety item for any cable or strap based vehicle recovery
- Reflective strip for nighttime visibility and handy storage pockets inside to keep your gear stored away whilst not in use



OFFSET HAWSE FAIRLEAD

DT-WSP01

- Suits any brand of bullbar designed for an offset fairlead
- Smooth rope operation while protecting synthetic ropes against damage



WARRANTY ALL WINCH EQUIPMENT - 3 Years

RECOVERY KITS & ACCESSORIES



MAMMOTH RECOVERY KIT (LARGE) DT-RKLGE

Drivetech 4x4's Mammoth Recovery Kit is a comprehensive package containing everything required for a vehicle based or winch based recovery, including:

- 8,000kg Snatch Strap (9m)
- 5,000kg Winch Extension Strap (20m)
- 12,000kg Tree Trunk Protector (3m)
- Recovery Hitch
- 2 x 4.75T Bow Shackles
- 8,000kg Snatch Block
- LED Head Lamp
- Folding Camp Shovel
- Folding Brush Saw
- Full leather Rigger's Gloves
- Sturdy Recovery Bag with internal and external pockets

12
PIECE KIT

JUMBO RECOVERY KIT (SMALL) DT-RKSML

Drivetech 4x4's Jumbo Recovery Kit is a comprehensive package containing everything required for a vehicle based recovery, including:

- 8,000kg Snatch Strap (9m)
- 2 x 4.75T Bow Shackles
- Recovery Hitch
- LED Head Lamp
- Folding Camp Shovel
- Folding Brush Saw
- Full leather Rigger's Gloves
- Sturdy Recovery Bag with internal and external pockets

9
PIECE KIT

RECOVERY BAG SMALL LARGE DT-RBSML DT-RBLGE

Recovery bags are also available for individual purchase:

- Solid, heavy duty bag to keep your recovery equipment organised
- Solid plastic base
- Internal and external pockets for handy storage



**WARRANTY ALL RECOVERY
EQUIPMENT - 1 Year**

RECOVERY EQUIPMENT CONTINUED

TREE TRUNK PROTECTOR

12,000kg 3m DT-TTP01

- **Minimum Breaking Strength 12,000kg**
- Used to prevent the ring-barking of trees when using a winch
- 100% polyester
- 75mm x 3m
- Reinforced eyes



WINCH EXTENSION STRAP

5,000kg 20m DT-WES01

- **Minimum Breaking Strength 5,000kg**
- Used to extend the reach of your winch cable to reach a strong, suitable anchor point
- 100% polyester
- 50mm x 20m
- Reinforced eyes



SNATCH STRAP

8,000kg 9m DT-SS001

- **Minimum Breaking Strength 8,000kg**
- 100% nylon
- 60mm x 9m
- Reinforced eyes

It is recommended that the minimum breaking strength of the rope should be between 2 and 3 times the vehicle's gross vehicle mass (GVM)



SNATCH STRAP

11,000kg 9m DT-SS002

- **Minimum Breaking Strength 11,000kg**
- 100% nylon
- 75mm x 9m
- Reinforced eyes

It is recommended that the minimum breaking strength of the rope should be between 2 and 3 times the vehicle's gross vehicle mass (GVM)



EQUALISER STRAP KIT 8,000kg

2.5m DT-ESK

- **Minimum Breaking Strength 8,000kg**
- Equalises the force over multiple recovery points
- 100% polyester
- Kit includes:
 - 2.5m Equaliser Strap
 - 2 x 4.75T Bow Shackles



RECOVERY POINTS

- Available to suit most popular models
- Rated points
- Supplied with fitting instructions
- Sold in pairs where applicable
- Painted yellow for visibility



FOLDING BRUSH SAW

DT-FLDSAW

- Folds up for safe storage
- 65Mn steel blade
- Open length 40cm



RIGGER'S GLOVES

DT-RIGLV

- 100% genuine leather
- Helps keep hands clean and safe from injury



BOW SHACKLE

4.75T DT-BS47

- Rated to 4.75T
- Tested to AS/NZS 2741.2002



DRAG CHAIN

DT-DRGCHN

- 18mm x 5m
- Comes complete with lug link and grab hook
- Grade 70 high tensile steel
- Includes carry bag



RECOVERY HITCH

DT-RECHTC

- Turn your towball mount into a safe, reliable recovery/tow point
- Fits all 2" hitch bars
- Includes 1 x 4.75T Bow Shackle



SNATCH BLOCK

8,000kg DT-SB8T

- Rated to 8,000kg
- Greasable for smoother operation and longer life
- Will handle up to 13mm cable



FOLDING CAMP SHOVEL

DT-FLDSHV

- Vital part of any serious 4WD recovery kit
- 2 lockable positions:
 - standard
 - 90 degrees
- Canvas pouch included



LED HEAD LAMP

DT-LEDHL

- Adjustable head straps
- 3 stage light:
 - 100%
 - 50%
 - strobe
- Runs on 3 x AAA batteries (included)



WARRANTY ALL RECOVERY EQUIPMENT - 1 Year

KINETIC RECOVERY ROPE

GET UNSTUCK FAST...

Features include:

- Approximately 30% stretch, resulting in a smooth recovery
- Durable double-braided nylon construction with protective sleeves for the eyes
- Easy to handle and will not kink
- Handy carry bag that allows the rope to be easily washed and dried whilst in the bag

It is recommended that the minimum breaking strength of the rope should be between 2 and 3 times the vehicle's gross vehicle mass (GVM)



RECOVERY ROPE

3,000KG DT-KRR01

- **Minimum Breaking Strength 3,000kg**
- 6m long
- Suitable for recovering ATV's and quad bikes

RECOVERY ROPE

8,000KG DT-KRR02

- **Minimum Breaking Strength 8,000kg**
- 9m long
- Suitable for recovering small to medium 4WD's and SUV's

RECOVERY ROPE

11,000KG DT-KRR04

- **Minimum Breaking Strength 11,000kg**
- 9m long
- Suitable for recovering medium to large 4WD's and SUV's

RECOVERY ROPE

20,000KG DT-KRR05

- **Minimum Breaking Strength 20,000kg**
- 9m long
- Suitable for recovering light to medium rigid trucks

WARRANTY ALL RECOVERY EQUIPMENT - 1 Year

HIGH LIFT JACK & ACCESSORIES

HIGH LIFT JACK 48"

DT-HLJ48

- Rated to 1,750kg
- Meets the mandatory requirements of AS/NZS 2693-2007
- Minimum height 98mm
- Maximum height 1,032mm



HIGH LIFT JACK BAG DT-HLJB

- To keep your Drivetech 4x4 High Lift Jack mechanism free of contaminants and ready for use



HIGH LIFT JACK STAND BASE DT-HLJSB

- Provides a solid base on uneven terrain for stability



HIGH LIFT JACK SPARE WHEEL MOUNT DT-HLJSWM

- Provides a solid mounting point for the jack on the rear wheel carrier found on most 4WD models
- Does not require removal of the spare wheel for installation



HIGH LIFT JACK WHEEL LIFT DT-HLJWLM

- Two rubber coated steel hooks allow lifting from nearly any type of 4WD wheel



HIGH LIFT JACK BUMPER LIFT KIT DT-HLJBLK

- Hooks to vehicle bumper to lift with the High Lift Jack



HIGH LIFT JACK & SHOVEL HOLDER MOUNT DT-HLJSHM

- Stores your High Lift Jack and shovel safely and securely
- Allows for easy access
- Adjustable mounts to suit most makes of roof racks and cages
- Easy to install and adjust



HIGH LIFT JACK HANDLE HOLDER DT-HLJHH

- Holds handle in an upright position during travel and storage



WARRANTY ALL RECOVERY EQUIPMENT - 1 Year

TYRE MAINTENANCE

AIR COMPRESSOR KIT

DT-COMPKIT

The Drivetech 4x4 Air Compressor Kit is a comprehensive kit that comes in a heavy duty bag with pockets.

- The kit includes:
 - Air Compressor (complete with 2m power cord with battery clamps and 6.5m rubber air hose with snap fittings)
 - Tyre Repair Kit
 - Tyre Deflator



AIR COMPRESSOR

DT-COMPRESSOR

- 180L/min Air Compressor
- Working pressure - 40psi
- Maximum pressure - 150psi
- Pistol grip inflator trigger with inbuilt deflator
- 2m power cord with battery clamps
- 6.5m rubber air hose with snap fittings
- Duty cycle is 15min (at 24°C) with five minute cool down time
- 12V - 45A
- Heavy duty bag with pockets



WARRANTY AIR COMPRESSOR KITS

3 Years

GET PUMPED UP

Correct tyre pressure is one of the most important factors in 4WDing. With an air compressor, tyre deflator and repair kit onboard, you will be ready to take the pressure down on the track and back up again before you hit the bitumen.



TYRE REPAIR KIT

DT-4X4TRP

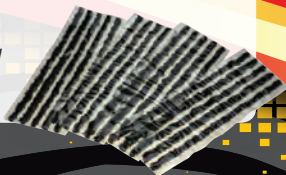
- Includes all tools required to repair a puncture
- Contains 20 plugs
- Handy plastic storage case



REPLACEMENT TYRE REPAIR PLUG

DT-1879-20

- Pack of 20
- Keeps your Tyre Repair Kit full and ready at all times



TYRE DEFLATOR

DT-DEFLATOR

- Ideal for quick and easy deflation
- Easy to use all-in-one mechanism
- Rubber protection sleeve around gauge head
- Handy protective storage pouch



TYRE INFLATOR

DT-INFLATOR

- Ideal for quick and easy inflation
- Accurate gauge



RECOVERY TRACK

DT-RTRACK

- For use in mud, sand or snow
- Unique tread design for maximum traction
- Heavy duty rubberised PVC
- High quality, insulated steel cable and fittings for long life and durability
- Handy roll up carry bag design for convenient storage



COMPRESSOR HOSE EXTENSION KIT

DT-CHEK

- 6.5m Extension Hose
- Allows the air compressor hose to reach a caravan or trailer
- Supplied with the same quality snap fitting joiner as the Drivotech 4x4 Air Compressor Kit hose



TYRE PRESSURE MONITORING SYSTEM

DT-TPM01

COMING SOON

- Specifications:
 - Fast/slow leakage alarm
 - High/low pressure alarm
 - Can upgrade to 10 tyres
 - Tyre pressure range:
 - 0~6Bar/0~87PSI
- Features include:
 - Wireless transmission
 - DIY installation
 - Real-time monitoring
 - High temperature alarm
 - All weather design
 - Audio alarm
 - Visual warning
 - Wireless LCD display
 - USB charging port
 - High temperature resistance battery
 - High efficiency solar panel
 - Long life battery



HANDHELD DIGITAL TYRE PRESSURE GAUGE

DT-TPG01

COMING SOON

- Specifications:
 - Measuring range: 0~6Bar / 0~87PSI
 - Operating voltage: 2.4~3.3V
 - Operating current: < 5mA
 - Operating temperature: -10°C ~70°C / +14°F~158°F
- Features:
 - Ergonomic handle
 - Automatic shut-off
 - Power-off memory function
 - Back-lit 1.6" LCD
 - High accuracy:
 - $\pm 0.1\text{Bar}$ / $\pm 1.5\text{PSI}$
 - Measuring range:
 - 0~6Bar / 0~87PSI
 - Convertible unit display in Bar or PSI
 - Replaceable CR2032 lithium battery (1 included)
 - Works in all weather conditions
 - Tyre pressure at a glance
 - Low battery indication



ADDITIONAL SENSORS

DT-TPM02

COMING SOON

- Additional sensors for use on trailers and spare wheels
- Replacement for lost or damaged sensors
- Sold as a pair



WARRANTY ALL TYRE MAINTENANCE EQUIPMENT - 1 Year

AWNINGS AND ACCESSORIES



GET COMFY OUTDOORS

Drivetech 4x4 now have a range of 4x4 vehicle awnings and add on accessories.

Whether you want to go camping or simply have a picnic at the beach, these awnings and accessories provide easy shelter and handy camping solutions.

Designed to be able to make a complete camping setup that stores away easily and provides maximum camping space.

Easy to set up and pack up, the range comes with instructions too - just in case.

AWNINGS

Easy to install and easy to use, these awnings are made from high quality 280GSM ripstop polyester material and feature:

- Aluminium knuckles on the poles
- Telescopic twist lock alloy legs
- UV stable heavy duty nylon storage bag
- L-brackets to suit easy universal installation to most roof racks

Available in four sizes:

- DT-AW001 - 2 x 2.5m
- DT-AW002 - 2.5 x 2.5m
- DT-AW003 - 2.5 x 3m
- DT-AW004 - 1.4 x 2m



AWNING TENTS

- 280GSM ripstop polyester and heavy duty PVC floor
- Fine mesh windows and doors
- Fast and easy setup

Available in two great sizes:

- DT-AWTENT1 - 2.5 x 2.5m
(to fit the DT-AW002 Awning)
- DT-AWTENT2 - 2.5 x 3m
(to fit the DT-AW003 Awning)



AWNING MESH KITS

Made from a nylon mesh these mosquito enclosures or mesh kits are designed to use when you're in the bush and trying to keep flies and mosquitoes away so you can just relax...

Available in four sizes:

- DT-AWMK1 - 2 x 2.5m
(to fit DT-AW001 Awning)
- DT-AWMK2 - 2.5 x 2.5m
(to fit DT-AW002 Awning)
- DT-AWMK3 - 2.5 x 3m
(to fit DT-AW003 Awning)
- DT-AWMK4 - 1.4 x 2m
(to fit DT-AW004 Awning)



AWNING WALL

DT-AWSW1

Handy Drivetech 4x4 Awning accessory that will provide extra shade no matter what time of the day it is or where the sun is coming from.

- Made from 280GSM ripstop polyester material
- Easy to attach and easy to pack up
- Fits all 2.5m awning sides and ends



MESH FLOOR

DT-AWFLOOR

A handy 3x3m mesh floor that provides a clean floor covering no matter what surface you are on.

- Made from 280GSM high density polyethylene
- 12 reinforced eyelets



SPARE WHEEL BAG

DT-SWSB

- Multipurpose design
- Internal storage pockets
- Adjustable mounting straps
- Waterproof



WARRANTY CAMPING
- 1 Year

DRIVETECH 4X4 BY RIVAL

BONNET STRUT KIT

Made in Russia using high quality German gas struts, these precision designed kits make it easy to lift your bonnet and hold it in that position giving you a clear and safe path to any maintenance in the engine bay. Each kit is vehicle specific and includes everything you need for a successful (no drill) installation. Available for:*

- DT-BS001 - Mitsubishi Triton MQ
- DT-BS002 - Mitsubishi Triton ML, MN
- DT-BS004 - Nissan Navara D40 & R51 Pathfinder
- DT-BS005 - Toyota Hilux KUN26
- DT-BS005 - Toyota Fortuner
- DT-BS006 - Toyota Hilux GUN126
- DT-BS008 - Nissan Navara NP300



TAILGATE ASSIST KIT

Made in Russia using high quality German gas struts, these precision designed kits make light work of lowering your heavy tailgate to ensure safe operation and slow opening. Easy to install. Available for:*

- DT-TGA01 - Toyota Hilux KUN26
- DT-TGA02 - Toyota Hilux GUN126
- DT-TGA03 - Ford Ranger PX
- DT-TGA04 - Isuzu D-MAX
- DT-TGA05 - Mitsubishi Triton MQ (with metal strap support)
- DT-TGA06 - Volkswagen Amarok
- DT-TGA07 - Mitsubishi Triton MQ (with cable support)
- DT-TGA08 - Nissan Navara NP300



* For latest model range listing for the Drivotech 4x4 Bumpers and Underbody Armour by Rival, contact your nearest Drivotech 4x4 Stockist, or visit our website, as listed on the back page of this booklet.

WARRANTY RIVAL ACCESSORIES
- 2 Years



PROTECT YOUR 4X4 FROM HARM

Continuing cutting edge research and design for the Australian and New Zealand markets, Drivetech 4x4 has partnered with Russian manufacturer, Rival Automotive Accessories to deliver high quality, full vehicle solutions for popular 4WDs in the market.

As with the Drivetech 4x4 hard parts, all accessories are sourced from industry-leading suppliers and manufacturers, both domestically and internationally. RIVAL are one such leading supplier and Drivetech 4x4 have exclusive distribution rights to their products in Australian and New Zealand.



DRIVETECH 4X4 BY RIVAL

CONTINUED

BUMPERS

Made from 6mm alloy to provide excellent strength and protection without the disadvantage of a heavy steel bar, the Drivotech 4x4 Bumpers are designed to ensure easy installation as a full replacement for the OE bumper. Stylish and functional these bars come in a matte black finish.

Features include:

- Built-in tow hooks and high lift jack slots
- High quality welds
- ADR69 compliant & airbag compatible
- Designed for ease of fitment with 6mm Drivotech 4x4 Underbody Armour by Rival
- Winch mount and easy winch access

TOYOTA HILUX GUN126

DT-2D5701B



TOYOTA HILUX KUN26

DT-2D5707B



FORD RANGER PX

DT-2D18081B



NISSAN NAVARA NP300

DT-2D41121B

COMING SOON



VW AMAROK

DT-2D58071B



UNDERBODY ARMOUR KITS

Using a high quality plate made from 6mm deep stamped alloy, these kits offer a lightweight and high strength solution that features:

- A significant weight benefit over traditional steel plates
- Stiffening ribs which provide twice the durability of flat skid plates
- A design that results in minimal influence to ground clearance
- Installation using existing vehicle bolt holes, with no need for drilling
- A powder coated finish and alloy material that won't corrode like steel plates

Available for 4WD models:*

- Ford Ranger PX
- Isuzu D-Max, MU-X
- Land Rover Discovery
- Mazda BT-50 B32P
- Mitsubishi Challenger
- Mitsubishi Pajero Sport QE
- Mitsubishi Triton ML/MN/MK/MQ
- Nissan Navara D40, D23
- Nissan Pathfinder R51
- Nissan Patrol GU Y61
- Nissan Patrol Y62
- Toyota 78 Series
- Toyota Fortuner
- Toyota Hilux GUN 126, KUN 26
- Toyota Landcruiser 100 Series, 200 Series, 200 series with DPF
- Toyota Landcruiser Prado 120 Series, Prado 150 Series
- Volkswagen Amarok



FUEL TANK ARMOUR

Separate underbody armour plates to protect the fuel tank are available for the:

- Ford Ranger PX
- Toyota Hilux KUN 26
- Toyota Landcruiser 200 Series
- Volkswagen Amarok



* For latest model range listing for the Drivetech 4x4 Bumpers and Underbody Armour by Rival, contact your nearest Drivetech 4x4 Stockist, or visit our website, as listed on the back page of this booklet.

WARRANTY RIVAL ACCESSORIES
- 2 Years

FLARES



FIT AND FLARE

Have you fitted a bigger wheel and tyre combo and need to widen your vehicle to suit? We have the solution.

- Made from a UV stable ABS plastic these flares come in a matte black finish.
- Kits include all four flares, clear instructions and everything you need for easy installation. You can put them straight on as is, or easily have them painted in your body colour.
- Simple and easy to fit with high quality 3M double sided tape, each kit comes with speed clips and screws to secure them to your vehicle.

FLARES

Available in 2 styles:

Offroad Design - a tough flare with a bolt-on look to increase the stance of your 4x4.

Available for 4WD models:*

- Toyota Hilux Revo (N80), Vigo (N70)
- Ford Ranger Face PX I, PX II
- Mitsubishi Triton MQ
- Isuzu D-MAX
- Mazda BT-50
- Nissan Navara D23

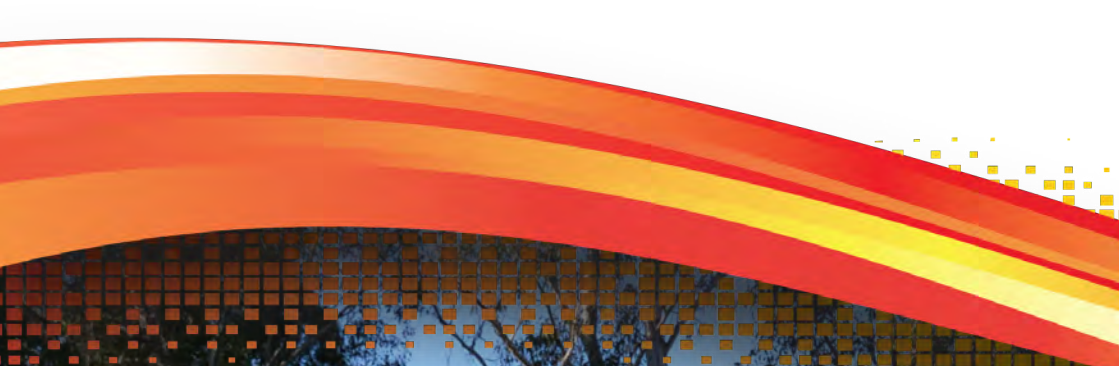
OE Design - a sleek smooth appearance that represents a factory style look, whilst allowing for a wider tyre and wheel combo.

Available for 4WD models:*

- Toyota Hilux Revo (N80), Vigo (N70)
- Ford Ranger PX I, PX II
- Mitsubishi Triton MQ
- Isuzu D-MAX
- Mazda BT-50

**Note: For latest model range listing, contact your nearest Drivotech 4x4 Stockist, or visit our website, as listed on the back page of this booklet.*





www.drivetech4x4.com.au
Engine, Body and Electrical
Steering and Suspension
Brake and Clutch
Accessories
Drivetrain
Filtration

DrivetechTM **AXA**
...driven by quality

DrivetechTM AX4

...driven by quality



LED LIGHT BARS

Features include:

- Operates on 10~30V DC
- Operating temperature -40 ~ +60°C
- Colour temperature 6,500K
- Combination spot and flood beam (20" and 30")
- Diecast aluminium housing
- Stainless steel adjustable mounting bracket
- Polycarbonate lens
- Waterproof rating IP67



11" LED LIGHT BAR DT-LB011

- 6 x 10W CREE LED's for a combined total of 4,050 lumens
- Spot beam configuration



20" LED LIGHT BAR DT-LB020

- 12 x 10W CREE LED's for a combined total of 8,100 lumens
- Combination beam pattern (2 x spread, 8 x spot, 2 x spread)



30" LED LIGHT BAR DT-LB030

- 18 x 10W CREE LED's for a combined total of 12,150 lumens
- Combination beam pattern (4 x spread, 10 x spot, 4 x spread)

To view the LUX readings for the Drivetech 4x4 LED lighting range, head to www.drivetech4x4.com.au/blog/drivetech-4x4-led-light-lux-readings



LED DRIVING LIGHTS

Features include:

- Operates on 10~30V DC
- Operating temperature -40 ~ +60°C
- Colour temperature 6,000K
- Diecast aluminium housing
- Stainless steel adjustable mounting bracket
- Innovative 4D polycarbonate lens
- Waterproof rating IP67

7" DRIVING LIGHT COMBO BEAM DT-DR7060CMB

- 12 x 5W CREE LED's for a combined total of 3,500 lumens
- Provides excellent spread, whilst having four spot beams in the centre ensures all areas of vision are covered



9" DRIVING LIGHT COMBO BEAM DT-DR120CMB

- 24 x 5W CREE LED's for a combined total of 8,000 lumens
- Provides excellent spread, whilst having four spot beams in the centre ensures all areas of vision are covered



7" DRIVING LIGHT SPOT BEAM DT-DR7060SP

- 12 x 5W CREE LED's for a combined total of 3,500 lumens
- Provides excellent distance for long, straight, country style driving



9" DRIVING LIGHT SPOT BEAM DT-DR120SP

- 24 x 5W CREE LED's for a combined total of 8,000 lumens
- Provides excellent distance for long, straight, country style driving



**WARRANTY ALL LIGHTS
- 3 Years**



LED WORK LIGHT

DT-LEDWL

- 6 x 3W CREE LED's
- A powerful 6" flood beam light that can be used in many applications.
- Adjustable bracket
- Waterproof rating IP67



3" FLUSH MOUNT WORK LIGHT

DT-LEDWL

- Flush mount
- 4 x 5W LED's
- Lumens: 1,712



3" WORK LIGHT

- 4 x 5W LED's
- Colour temperature 6,000K
- Stainless steel adjustable mounting bracket
- Waterproof rating IP67
- Available in two types:
 - Spot: DT-LEDWL3S
 - Flood: DT-LEDWL3F



LIGHT BAR LOCK NUT KITS

- Theft deterrent solution
- Stainless steel
- Suitable for most brands of lights
- Each kit contains two lock nuts and a tool
- Available in three sizes
 - M6, M8, M10



DRIVING LIGHT COVERS

- Available in 7" and 9"
- Made from a heavy duty acrylic
- Protects your driving lights from damage by stones or other objects
- Sold as a pair



LED LIGHTING MOUNTING CLAMPS

- Securely fastens the full range of Drivetech 4x4 LED lights to bullbars and roll bars
- Includes an insulator to protect the clamp surface and minimise noise
- Nuts, bolts and washers are all stainless steel to prevent rust
- Sold as a pair
- Available in four sizes to suit up to 3"



LIGHT WIRING KIT

DT-LBWH

- Can be used for one or two lights/light bars
- Contains all necessary switches, relays and connectors plus generous lengths of cable
- Instructions included
- Made in Australia



WARRANTY

LED WORK LIGHT AND 3" WORK LIGHT - 3 Years
LIGHT WIRING KIT, MOUNTING CLAMPS, COVERS AND LOCK NUTS - 1 Year

CAMPING LIGHTS

LED STRIP LIGHT KIT DT-LEDSL1

120cm individual strip light with a snap hook at each end making it quick and easy to put up anywhere, anytime. Comes in a soft waterproof case.

Kit includes:

- Cigarette lighter power adaptor (12V-2A)
- 240V battery power adaptor
- Waterproof remote control
- Padded storage bag with pockets to neatly store all wiring and LED strips



PORTABLE LED WORK LIGHT DT-LEDPWL

DT-LEDPWL

- Slim design for accessing tight areas
- Magnetic base with 360° swivel
- Swivel hanging hook
- USB charger with 12V adaptor for charging on the go
- Built-in Li-ion battery
- Rotary adjustable dimmer switch
- Up to 10 hours use on a full charge



LED STRIP LIGHT BAR KIT DT-LEDSLKIT

LED strip light kit that is perfect for camping or keeping in the back of the car for when you have your new Drivetech 4x4 awning set up. All connectors and leads come with waterproof screw together fittings.

Kit includes:

- 4 x 400mm LED light bars with magnets to allow easy setup
- 4 x on/off switches (each strip can be controlled individually)
- 3m lead with cigarette lighter plug
- 2m battery clamp to cigarette adaptor
- 2 x 3-way splitters
- Includes over 22m of extension cable
 - 2 x 2.4m
 - 2 x 1.2m
 - 1 x 10m
- 10 x velcro strips

ROLL UP STRIP LIGHT DT-LEDSLROLL

Versatile strip light kit that can be rolled out to any distance up to 4m or trimmed to suit. With the handy velcro strips, you can light up any part of your campsite.

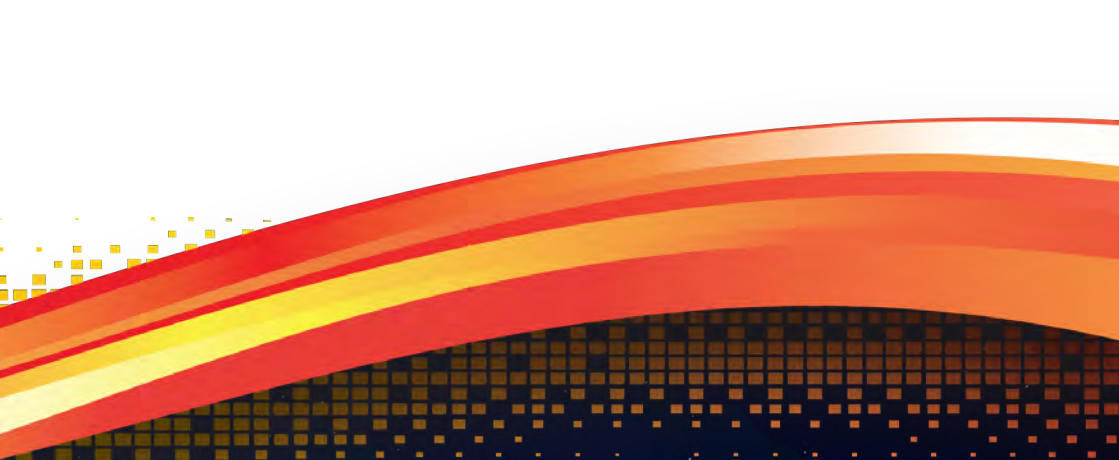
Kit includes:

- 4m roll-up LED strip light with detachable spool
- 3m lead with cigarette lighter plug
- Dimmer switch
- 8 x velcro strips (to secure wiring or LEDs)
- Storage bag



WARRANTY ALL STRIP LIGHTS & PORTABLE WORK LIGHT

- 1 Year





ENJOY POWER ANYWHERE

Drivetech 4x4 have teamed up with Ark Corporation to bring you Ark power products that allow you to have power anywhere.

ARK AC/DC BATTERY CHARGER ACDC7

- 7A, 7 stage smart charger
- Charges main battery types/sizes
- Time tracker LCD screen
- Monitors and conditions battery

Additional Features:

- Battery monitor/analyser
- Secure AC/DC connection
- DC interchangeable connection
- Vehicle mounting bracket



ARKPAK USB LIGHT APLED

Multi-positioning USB light with one touch on and off, as well as variable dim settings



ARKPAK MOUNTING BRACKET APB20B

Secure mounting kit for your ArkPak to protect it through the roughest terrain



ARKPAK 730 POWER PACK AP730

- Built-in 7A smart charger
- Built-in 300W inverter 220V
- 50A Anderson Plug
- 5V/2.1A USB port
- Dual battery system alternative
- Time tracker technology
- Interactive LCD screen
- Recharges via:
 - AC/DC 220V
 - DC/DC 12/24V
 - Solar
- Includes a 'lock in' charge connector suited for off road usage



ARKPAK DUAL USB APUSB

Turns your 12V socket into a dual USB port rated at 5V/2.1A



WARRANTY ELECTRICAL
- 1 Year

ARKPAK SOLAR PANELS

The ArkPak Solar Panels are a great solution to keep you powered when you're camping and four wheel driving.

PORTABLE SOLAR PANELS

Ultra-lightweight and portable. Designed for basic back-up power, they have a maximum output of 7W and automatic start function.

APSP7D ArkPak FREEDOM 7

- Supplies a 1A USB charge

APSP14D ArkPak FREEDOM 14

- Supplies a 2A USB charge



140A DUAL BATTERY KIT DT-ABK140

- 12V/24V Dual Battery Kit
- Manual override switch
- Priority charging for main battery
- 13.3V cut in and 12.8V cut out
- Fully automatic
- Complete kit ready to install



DUAL BATTERY MONITOR DT-ABKM

Monitors the condition of main and auxiliary battery with low and high voltage alerts and switchable LCD display



ANDERSON PLUG KIT DT-APK

50A male and female Anderson plugs



AMORPHOUS FOLDABLE SOLAR PANELS

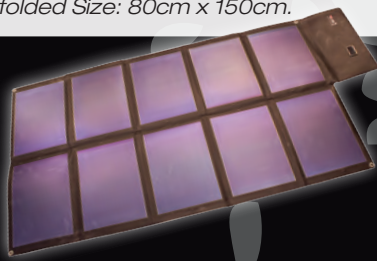
The ultimate in base camp solar charging. Light weight and highly efficient, these flexible panels can be easily transported and set up anywhere your adventure takes you. Super space saving, these highly efficient amorphous panels work in low light or partial shade.

APSPF30D 30W Foldable Solar Panel

- 30W solar panel
- 4.5A charge controller
- 3m lead with alligator clips
- Max current: 2A
- Max voltage: 15V
- Folded size: 40cm x 15cm x 3cm
- Unfolded Size: 80cm x 90cm

APSPF60D 60W Foldable Solar Panel

- 60W solar panel
- 4.5A charge controller
- 3m lead with alligator clips
- Max current: 4.2A
- Max voltage: 15V
- Folded size: 40cm x 28cm x 3cm
- Unfolded Size: 80cm x 150cm.



DUAL BATTERY EXTENSION LEAD KIT DT-ABKELK

- Additional cable for running auxiliary battery to trailer or caravan
- Removes the need for modification to OE wiring
- 50A Anderson style connectors
- Everything needed to install included



SNORKELS

SNORKELS

Available for 4WD models:*

- Toyota Hilux
- Isuzu D-MAX
- Holden Colorado
- Nissan Patrol GU Ute, GU Wagon
- Toyota Landcruiser Prado 120 Series, 150 Series
- Mitsubishi Pajero
- Mitsubishi Triton
- Nissan Navara
- Toyota Landcruiser 80 Series, 100 Series (IFS petrol), 100 Series (Live Axle Front), 200 Series
- Ford Ranger
- Mazda BT50
- And many more

*Note: For latest model range listing, contact your nearest Drivetech 4x4 Stockist, or visit our website, as listed on the back page of this booklet.

R-SPEC

This range suits non-current model vehicles only.

Key features:

- Manufactured in Australia from Safari's own Recreational Specification (R-SPEC) UV Stabilised Polyethylene.
- The R-SPEC Safari Snorkel still uses the same moulds and Australian moulding processes for which it is rightly famous. They are NOT redesigned.

V-SPEC

The traditional Safari Snorkel range, but largely restricted to current model vehicles. Essentially unchanged from the current Safari Snorkel.

Key features:

- Manufactured in Australia from Safari's own Industrial Spec UV Stabilised Polyethylene
- Identical look to the current versions of the Safari Snorkel
- Primarily suit current model vehicles.

ARMAX™

Performance orientated Safari Snorkels that provide the necessary airflow required by those wishing to increase vehicle engine performance.

Key features:

- Safari's own Industrial Spec UV Stabilised Polyethylene
- Safari's rounded style Air Ram with minimum 4" neck and an optimised air flow, low restriction grill
- Design and flow tested for maximum performance.

BREATHE EASY WITH SAFARI SNORKELS



Pioneered in Australia in the early 1980's, Safari Snorkels are:

- Thoroughly researched, tested and tooled for popular 4WD models
- Manufactured to the highest standards in durable, UV stable, cross-linked polyethylene material and deliver a continuous and cooler supply of air for maximum engine performance
- Inclusive of quality fixtures and fittings that deliver superior sealing, OEM levels of presentation and long-term durability
- Positively sealed in order to provide the engine with the ultimate in protection during river crossings and dusty desert driving conditions



SUSPENSION

DRIVETECH 4X4 SUPASHOCK PERFORMANCE SUSPENSION KITS

COMING SOON

The Drivetech 4x4 Supashock suspension range has been specifically designed for the demanding and highly-variable environments encountered by 4x4 vehicles.

Engineered to high standards, the 4x4 suspension system offers rapid damper response – essential in off-road driving, and low traction environments. For on-road use, the dampers maximise ride comfort, handling and safety.

Key Benefits:

- **Ultimate Handling**
The Drivetech 4x4 Supashock provides ultimate vehicle handling and traction leading to increased safety, reduces braking distance and increases tyre life.
- **Greater Offroad Traction**
Drivetech 4x4 Supashock suspension keeps the tyres on the ground maximising tyre traction in tough, slippery conditions.
- **Heavy Load Carrying**
Drivetech 4x4 Supashock suspension packages offroad and 4x4 needs and provide stability while carrying heavy loads.
- **Quality and Performance**
The Supashock 4x4 range is the only fully Australian designed and manufactured high-end product, and outperforms the competition in all terrain.

Features:

- **Proprietary Anti-Roll System**
Drivetech 4x4 Supashock dampers are incorporated with a proprietary anti-roll system, which improves vehicle stability.
- **Passive Reactive Technology**
Drivetech 4x4 Supashock dampers are equipped with passive reactive technology, enabling the optimum balance between ride comfort and handling to be maintained across a wide variety of surfaces, driving conditions and loads.
- **Australian Made**
Drivetech 4x4 Supashock dampers are proudly manufactured in Australia.

WARRANTY
DRIVETECH 4X4 SUPASHOCK
3 Years / 80,000km



Drivetech™ AXA SUPASHOCK



Having Supashocks in our Team Triton SuperUtes provides us with the confidence and capability to safely push the vehicles to the absolute limit.

The high quality suspension system provides confidence in all weather conditions whilst maximising ride comfort, handling and safety.

Engineered to the highest standards, the Drivetech 4x4 Supashock suspension system offers rapid damper response – as essential in low traction environments such as off road driving as it is on the race track.

CRAIG DONTAS, TEAM TRITON DRIVER

PERFORMANCE NEVER LOOKED SO GOOD

The Drivetech 4x4 Enduro Pro remote reservoir monotube shock performs even better than it looks. The remote reservoir provides excellent heat dissipation to improve shock performance whilst allowing for extra shock travel when offroad.

ENDURO PRO SHOCK ABSORBERS & STRUTS

- Multi-stage valving - providing both comfort and performance
- Height adjustable spring seat struts - for fine tuning ride height
- Braided line to reservoir - reducing the risk of damage to the line when offroad
- 20mm chrome piston rod - for extra strength when side load exists during full travel
- 46mm diameter piston - allowing for more precise tuning
- Triple O-ring swivel connector - tightly sealing the system from water and dust
- Heavy duty rubber bushes - for a long life cycle

Available for 4WD models:*

- Ford Maverick DA
- Ford Ranger PX, PX II
- Holden Colorado RG, 7
- Isuzu D-MAX TF II
- Isuzu MU-X
- Mazda BT-50 B22P, B32P
- Mitsubishi Triton ML, MN, MQ
- Nissan Navara D23, D40
- Nissan Patrol GQ Y60, GU Y61, Y62
- Toyota Hilux GGN25R, GUN126R, KUN26R
- Toyota Fortuner GUN156R
- Toyota Landcruiser - various models
- Toyota Prado - various models

*Note: For latest model range listing, contact your nearest Drivetech 4x4 Stockist, or visit our website, as listed on the back page of this booklet.



WARRANTY
DRIVETECH 4X4 ENDURO PRO SHOCKS
- 3 Years / 80,000km

Drivetech™ **AXA**

ENDURO **PRO**



ENDURO STEERING DAMPERS

- Twin tube
- 35mm bore



ENDURO NITRO GAS SHOCK ABSORBERS & STRUTS

- Nitrogen gas charged
- Twin tube
- Self-lubricating multi-lip oil seal
- 35mm bore
- 16-18mm chromed piston rod
- Suits up to 50mm raised suspension



ENDURO FOAM CELL SHOCK ABSORBERS

- Foam-cell technology
- Twin tube
- 50mm bore
- 20mm chromed piston rod
- Heavy duty construction
- Suits 50mm raised suspension
- Available in heavy duty and extra heavy duty (constant load)



ALSO AVAILABLE SEPERATELY

- Pins, Poly Bushes, Shackles, Strut Tops, and U Bolts are also available for separate purchase



WARRANTY
SHOCK ABSORBERS & DAMPERS - 3 Years / 80,000km

ENDURO SUSPENSION LIFT KITS

Drivetech 4x4 Enduro Suspension Lift Kits are engineered for ultimate suspension performance.

They contain everything you need to successfully raise your 4WD for increased on road comfort, and offroad performance.

ENDURO PRO SUSPENSION LIFT KITS



- Available in heavy duty and extra heavy duty (constant load)
- Suits up to 50mm raised suspension
- Shock absorbers and struts
 - Multi-stage valving
 - Height adjustable spring seat struts
 - Braided line to reservoir
 - 20mm chrome piston rod
 - 46mm diameter piston
 - Triple O-ring swivel connector
 - Heavy duty rubber bushes
- Australian made coil springs
- Greasable shackles and pins
- Polyurethane bushes

ENDURO FOAM CELL SUSPENSION LIFT KITS



- Available in heavy duty and extra heavy duty (constant load)
- Suits up to 50mm raised suspension
- Shock absorbers
 - Foam-cell technology
 - Twin tube
 - 50mm bore
 - 20mm chromed piston rod
 - Heavy duty construction
- Australian made coil springs
- Greasable shackles and pins
- Polyurethane bushes

ENDURO NITRO GAS SUSPENSION LIFT KITS



- Available in heavy duty and extra heavy duty (constant load)
- Suits up to 50mm raised suspension
- Shock absorbers and struts
 - Nitrogen gas charged
 - Twin tube
 - Self-lubricating multi-lip oil seal
 - 35mm bore
 - 16-18mm chromed piston rod
- Australian made coil springs
- Greasable shackles and pins
- Polyurethane bushes
- Heavy duty torsion bars

WARRANTY SUSPENSION KITS
- 3 Years / 80,000km

SUMOSPRINGS

DRIVETECH SUMOSPRINGS REVOLUTIONARY 'AIRLESS AIRBAGS'...

Introduced to the Australasian automotive aftermarket in late 2012, this revolutionary product was the world's first load assist "airless airbag" suspension system.

Manufactured using a highly durable microcellular polyurethane material that provides progressive compression under load and variable road conditions.

Extraordinarily durable, Drivetech SumoSprings eliminate the frustrations of leaking or puncturing, which are so common in conventional airbags. There is minimal possibility of system failure with Drivetech SumoSprings, as they don't require air lines or compressors.

The microcellular polyurethane won't rupture and – incredibly – it can even be punctured without causing any loss of performance!

Drivetech SumoSprings:

- 100% maintenance free
- Leak and rupture proof
- Reduce rear end sag
- Reduce body roll
- Self-adjusting
- Easy to install – no drill installation
- Simply fit and forget



SUMOSPRINGS - VARIABLE

Suitable for utes, vans and 4WD's that are:

- Fitted with leaf spring suspension
- Carrying heavy, variable loads



SUMOSPRINGS - CONSTANT

Suitable for utes, vans and 4WD's that are:

- Fitted with leaf spring suspension
- Carrying heavy, constant loads



SUMOSPRINGS LITE - COIL

Suitable for utes, vans, 4WD's and passenger vehicles that are:

- Fitted with coil suspension
- Carrying light to medium loads



SUMOSPRINGS LITE - LEAF

Suitable for utes, vans, 4WD's and passenger vehicles that are:

- Fitted with leaf spring suspension
- Carrying light to medium loads



**WARRANTY SUMOSPRINGS
- 2 Years / 60,000km**

VEHICLE SPECIFIC DIESEL PRE-FILTER KIT

Designed by diesel fuel injection manufacturers as a pre-filter to the original equipment filter, Drivetech 4x4 Fuel Manager protects vital diesel injection components from water, humidity, acids and other contaminants before they hit the primary fuel filter.

These kits are easily installed in your engine bay without having to modify any existing vehicle components. With multiple inlet and outlet ports, this dynamic design allows flexibility during installation.

Why is Drivetech 4x4 Fuel Manager the best choice?

- Longlife filter media has been heat and chemically treated for maximum durability and acid resistance
- Easy view, see through polycarbonate drain bowl
- Suits all diesel engines from 50 to 350 horse power (37 to 261 kilowatts) with a maximum fuel operating pressure of 60 p.s.i.

Vehicle specific Drivetech 4x4 Fuel Manager diesel pre-filter kits include:

- Drivetech 4x4 Fuel Manager diesel pre-filter unit
- Vehicle specific high-grade stainless steel mounting bracket
- Step-by-step installation instructions
- Brass barbs and plugs
- Vehicle specific fuel line hose and connectors
- Polycarbonate bowl



VEHICLE SPECIFIC PROVENT CATCH CAN

Drivetech 4x4 aftermarket vehicle specific Catch Can Kits are designed for separating oil and preventing contamination of diesel engine induction systems.

The range includes:

- Vehicle specific kits
- Universal kits
- Replacement elements

Kits include:

- ProVent® Catch Can Vehicle specific stainless steel bracket
- Pressure control valve
- Pressure relief / Bypass valve
- Hose and reducers
- Nuts, bolts and clamps
- Comprehensive installation instructions



VEHICLE SPECIFIC FILTER SERVICE KITS

Drivetech 4x4 Filter Kits are made to high quality standards to meet the harsh demands of off road environments.

Kits are available for most makes and models in Australia and New Zealand.

The filters contain a high quality filtration medium to ensure maximum engine efficiency and reliability.

Each kit contains all necessary service filters.



UNIVERSAL 2 POINT DIFF BREATHER KIT

DT-2DBK

This easy to install universal diff breather kit comes with everything you will need to protect your front and rear diff from water ingress.

- Reduces the risk of damage to the front and rear diff on your 4x4 with a simple yet effective design
- Ensures easy fitment and maintenance
- Allows connection of a hose to a high point of the engine bay safely and securely to reduce the risk of damage to the tube from moving objects

Kit includes:

- 1 x 10m hose
- 4 x clamps
- 1 x mounting bracket
- 2 x barb fittings and filters
- 10 x cable ties



**WARRANTY FILTRATION
- 1 Year**

MERCHANDISE

FLEECE HOODIE

- 50% polyester : 50% cotton
- Brushed inner jersey knit
- Low pill fleece
- Full front zip, hood and side pockets
- Available in small, medium, large, XL, 2XL, 3XL and 5XL



STAINLESS STEEL COOLER

 DT-SSCOOLER

- 25L stainless steel cooler with aluminium inner
- Carry handles and bottle opener attached



SEAT COVER

 DT-SEATCOVER

- Hard wearing and washable polyester seat protector
- Pull over style that is designed to fit most single front vehicle seats



JACKET

- Three layer softshell jacket
- Showerproof, wind resistant, breathable, tough wearing and insulative
- Available in small, medium, large, XL, 2XL, 3XL and 5XL



KEYRING

 DT-KEYRING

- Nickel plated steel keyring with split ring attachment



T-SHIRT

- 100% cotton - 180GSM combed jersey knit
- Available in charcoal only
- Available in small, medium, large, XL, 2XL, 3XL



BOTTLE OPENER

 DT-OPENER

- Laser engraved stainless steel bottle opener
- 180mm x 40mm



CAP

DT-CAP

- Black cotton snapback cap



STAINLESS STEEL MUG

 DT-SSMUG

- 400ml laser engraved stainless steel mug



STUBBY HOLDER

DT-STUBBY

- Drivtech 4x4 branded stubby holder



SUNSHADE

 DT-SUNSHADE

- Spring-loaded sunshade
- Folds away into a pouch
- 130cm x 60cm



**For further information
please contact:**

Australia
1800 463 646
www.drivetech4x4.com.au

New Zealand
0800 333 125
www.drivetech4x4.co.nz

Drivetech TM **4x4**
...driven by quality

**Follow
Drivetech 4x4
on Facebook,
Instagram and
YouTube!**

Join our community and
share photos, ask questions
and keep up to date with the
latest from Drivetech 4x4.



Available from:

October 2018 - Edition 5 - New Zealand

Also available in the Drivetech 4x4 range:



Brake & Clutch



Drivetrain



Engine, Body & Electrical



Filtration



Suspension

You are entitled to a replacement or refund for a major failure and for compensation for any other reasonably foreseeable loss or damage. You are also entitled to have goods repaired or replaced if the goods fail to be of acceptable quality and the failure does not amount to a major failure.

Motospecs, a division of GPC Asia Pacific ABN 97 097 993 283
www.motospecs.com.au Phone: 1800 463 646